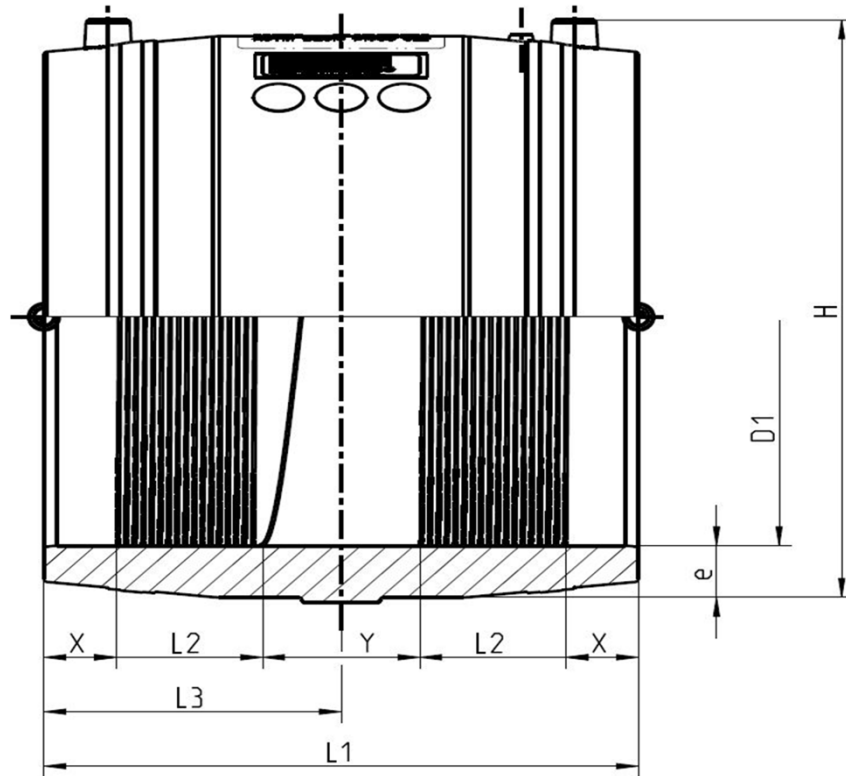


COUPLER 8IPS PE4710 Black

Reference n°: 616691



	Ω	D1*	e	H	L1	L2	L3	X	Y	
MAXIMUM VALUE	0,73	8,650	1,020	10,709	9,291	2,563	4,646	1,083	2,378	Inches
		(219,7)	(25,9)	(272,0)	(236,0)	(65,1)	(118,0)	(27,5)	(60,4)	(mm)
MINIMUM VALUE	0,63	8,626	0,969	10,630	9,213	2,413	4,606	1,043	1,921	Inches
		(219,1)	(24,6)	(270,0)	(234,0)	(61,3)	(117,0)	(26,5)	(48,8)	(mm)

* D1 = Average \varnothing and ovality (max 1,5%) measured at mid length $(X + L2/2)$

TECHNICAL SPECIFICATIONS

PRODUCTION SITE : MANNHEIM - GERMANY

 RESIN { INSERT : Ineos Eltex TUB121
 ENCAPSULATION :

BAR CODE LABEL :



TERMINAL PIN : 4 mm

MARKING :



FUSION CONDITIONS

VOLTAGE	41 Volts
+ 20°C	485 sec.
- 30°C	655 sec. (+0,4%/°C)
+ 50°C	442 sec. (+0,4%/°C)
COOLING TIME	60 min

* FITTING TESTED ON PIPE SDR11

MODIFICATION SINCE LAST REVISION :

Cooling time in the barcode has been updated. Temperature + 23 °C under FUSION CONDITIONS was adjusted to + 20 °C.